



Inovativna rješenja u automobilskoj industriji

CAD/CAM Grupa, Zagreb, 2.6.2015.

CADCAM Grupa je vodeći provider PLM rješenja u jugoistočnoj Europi.

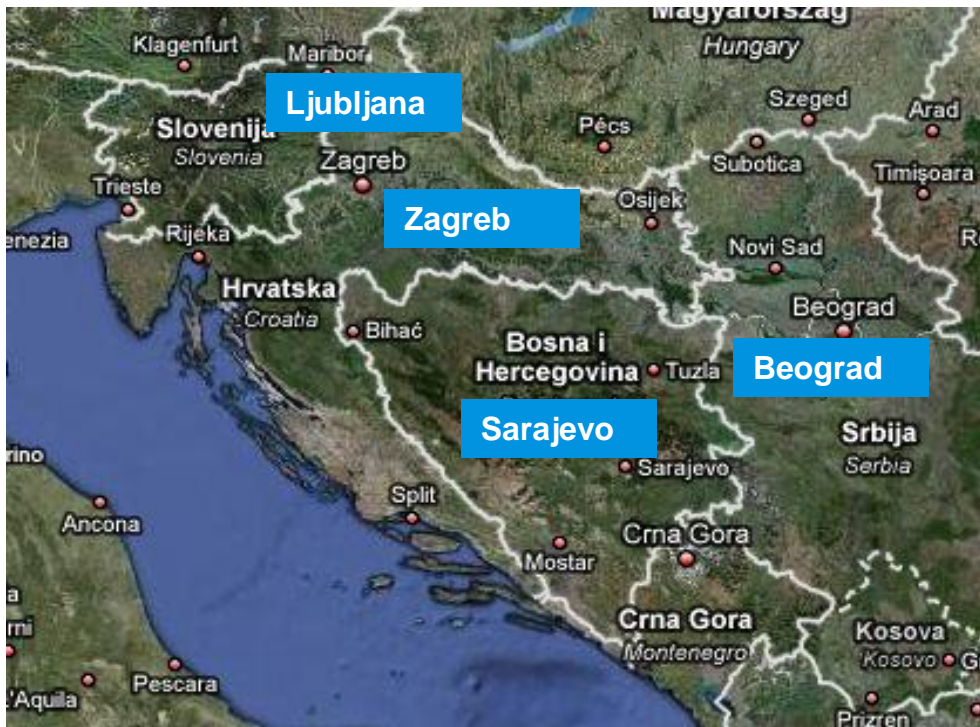
Zlatko Šimunec
CEO CADCAM Group

Zagreb, 2. lipnja 2015.

About CADCAM Group (CCG)

CADCAM Group is the leading Product Lifecycle Management (PLM) Solution provider in South-East Europe

We provide an end-to-end solution consisting of industry leading products, implementation services and technical support from our experienced team of consultants, engineers and designers based in Croatia, Slovenia, Bosnia & Herzegovina and Serbia.



Dassault Systemes Partner for Product Lifecycle Management Solutions since 1995

- CATIA, DELMIA, SIMULIA,
- ENOVIA SMARTEAM, 3DVia
- CAA partnership
- SOLIDWORKS development partner
- Education partner

MENTOR Graphics Partner since 2015

- Electronic Solutions for PCB Development
- PADS, Xpedition, HyperLynx and Valor
- Mentor Graphics Open door Partner since 2010

Services

- ECAD & MCAD integration - MECODES
- Engineering Services
- Business Integration Services
- Education Services

www.cadcam-group.eu

founded in 1991

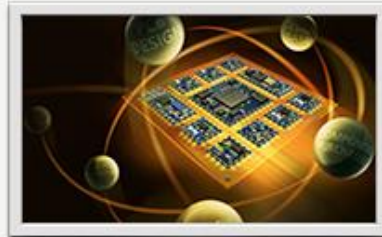
- 60 high skilled professionals, engineers and software developers present in four countries

CCG's pillars, expert's knowledge & services areas for the virtual product development



3DEXPERIENCE
Solutions

Mechanic 3D
design software



Electronics
Solutions

Electronic
design software



Software Development
Solutions

Software
Development



Engineering Services
Solutions

Engineering and IT
Services

CCG is a Solution Company for Product Lifecycle Management

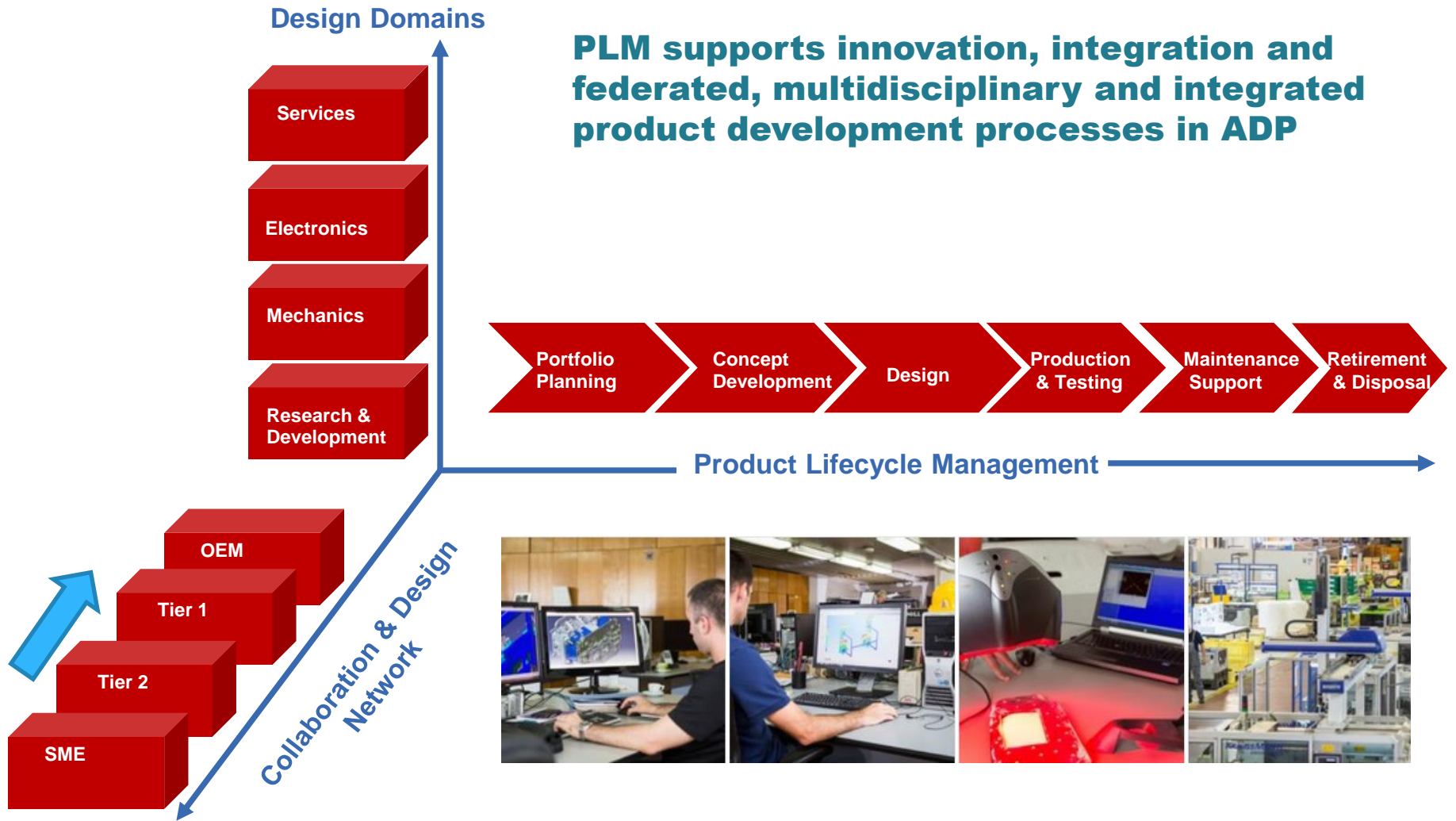
We combine applications, engineering services and our intellectual capitals, focused on particular industry & customer challenges and driving measurable business values

Innovation key success in Automotive industry

- German automotive industry decided to stay with DS solutions CATIA for next 10 Years
- BMW the most innovative car manufacture, Toyota and VW follows
- Croatia is part of EU and for us this is great opportunity to be TIRx automotive supplier
- PLM which support innovation is one of the most important factor to success in Automotive industry
- Multi domain collaboration is the leading innovative environment to move you in the leading position against competition
- CAD/CAM Group created a supplier solution packages, specifically developed for your individual efforts with software, implementation, support and educations tailored to the requirements of your specific needs for automotive industry.



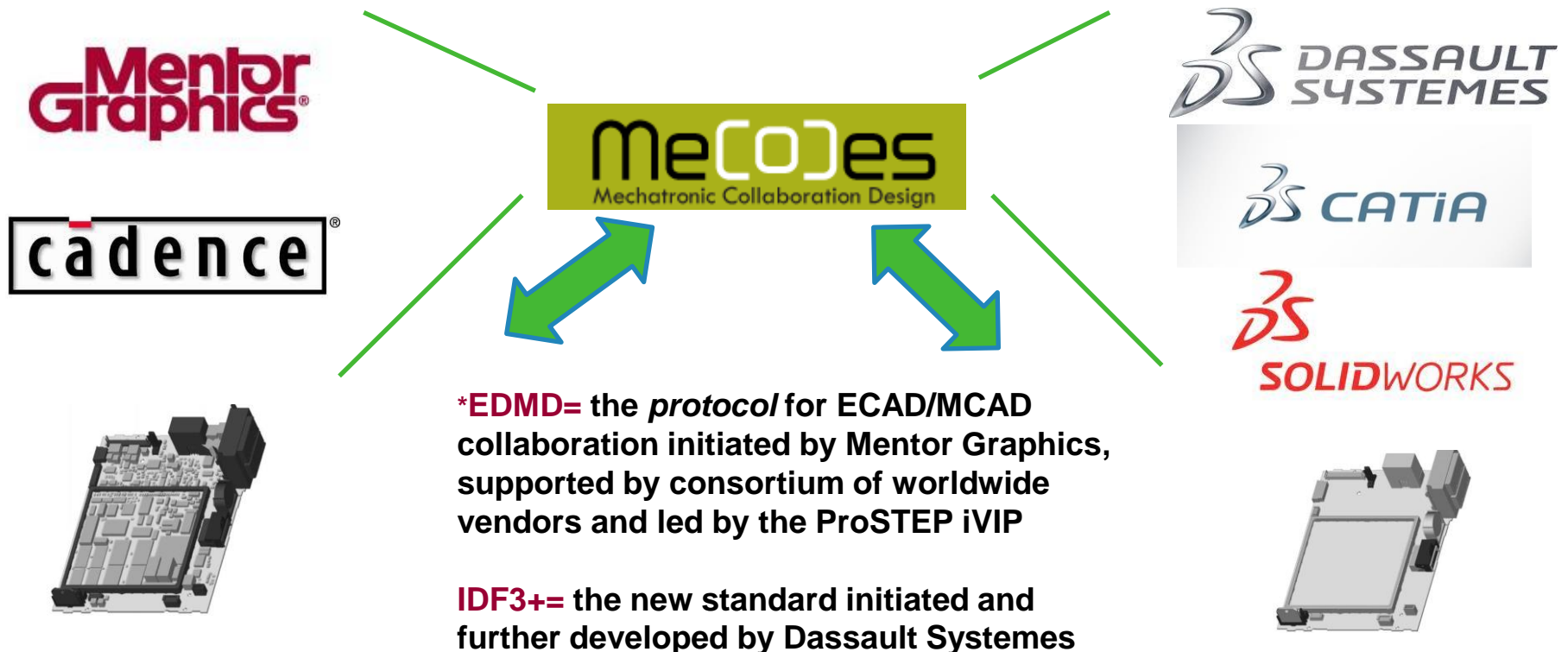
PLM Framework for OEM's and Tier 1 Suppliers



MECODES EDMD* and IDF3+**

Mechatronic Collaboration Design Solution = MECODES

MECODES is a software solution to merge the different worlds of E-CAD and M-CAD for a process driven collaboration in product development



CADCAM Group's Services Disciplines

■ Engineering Services

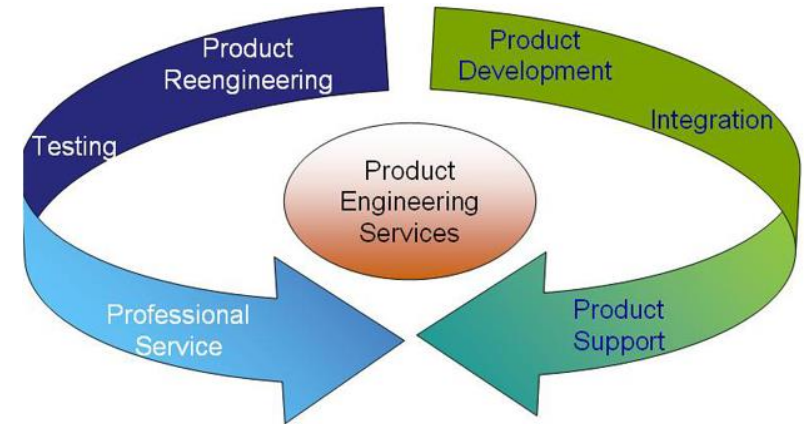
- PLM Consultancy
- Product development with the Dassault Systemes Software Portfolio
- CAM, Analysis & Simulation

■ Integration and IT Services

- Business Processes and PLM integration
- Integration Services
 - Integration of PDM, ERP (SAP) to business processes

■ Support and Education Services

- Implementation and How to use CATIA V5, ENOVIA, V6, MECODES
- Design Methodologies for the electro-mechanical product development (CATIA V5 or SolidWorks in combination with Mentor Graphics, Cadence or AD)



Project in lightening for automotive



- HELLA Saturnus Slovenia
 - Design of Light Systems for OEM's
 - Consulting, Design methodologies, Calculations, Education...

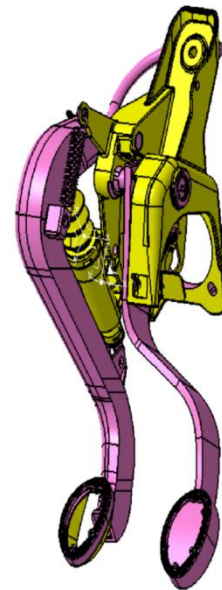
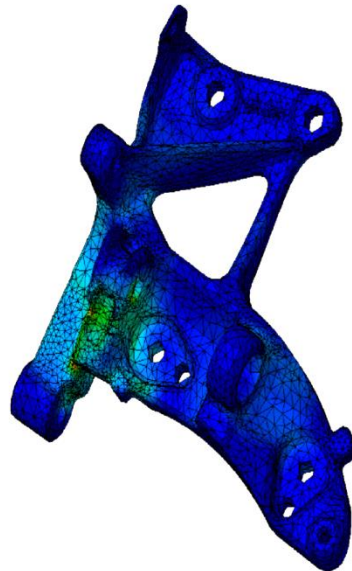
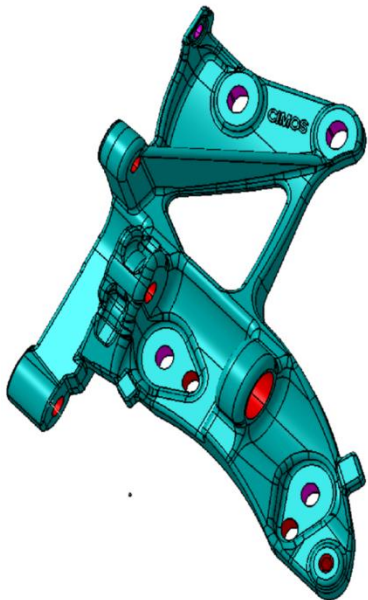


Projects in pedal brakes for automotive



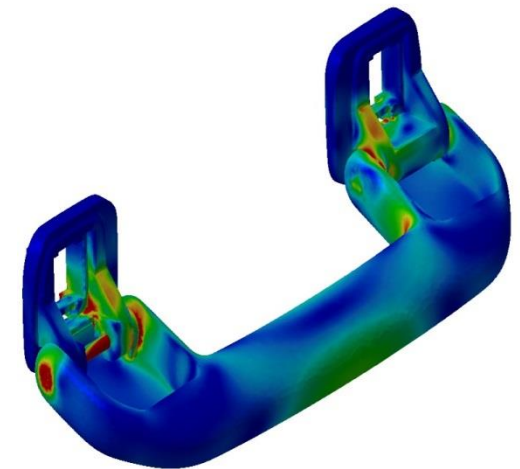
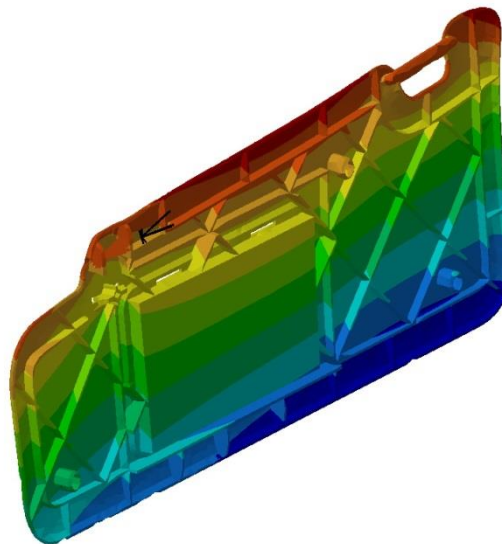
■ CIMOS

- Automotive Systems and Components
- Engineering, Kinematics
- FEA (Linear and Nonlinear, Crash, Pedestrian Safety)
- Pedal Boxes, Alternator Brackets, Auxiliary Brakes...



Project in interior for automotive

- AD Plastik
 - Automotive Components for OEM
 - Engineering & FEA (Thermal and Nonlinear analysis)
 - Reverse Engineering



Project wooden bike

- Gasper Cafuta
 - Simulia – Abacus analyze



Vodeći referentni korisnici CAD/CAM Grupa



Das Auto.



THANK YOU

www.cadcam-group.eu

